

# The Tides 21

Location: The Tides Private Estate on Goose Valley Golf Estate

Sleeps: 10

---

## Entrance

### Access to a single garage

### Large open plan games room with TV lounge (can be closed off with sliding door)

- Pool table
- Table tennis table
- Piano
- Coffee/bar station with built in undercounter fridges
- Coffee machine (bean to cup), kettle, sink
- Closed wood burning fireplace
- TV Room
  - Seating for 6-8
  - Smart TV
  - Sliding doors to patio

### Guest cloakroom

- Basin and toilet

### Bedroom 1 – opens onto patio – view of garden

- 1 x King size bed
- 2 x Pedestals with lamps
- Dressing table and stool
- armchair
- Built in cupboards
- En-suite bathroom
  - Free standing bath
  - basin
  - Toilet
  - Walk in shower
  - Heated towel rail

### Bedroom 2 – sliding door to balcony

- 1 x King size bed
- 2 x pedestals with lamps
- Armchair
- En-Suite bathroom
  - Shower
  - Toilet basin
  - Heated towel rail

### **Laundry**

- Washing machine
- Tumble dryer
- Dishwasher
- Double sink

### **UPSTAIRS**

#### **Open plan lounge/dining/kitchen and study nook**

**Views over the lagoon, Tsitsikamma mountains, ocean and Robberg Peninsula**

#### **Lounge area – opens to outdoor entertainment patio**

- Comfortable seating for 8-10

#### **Dining area – opens to outdoor entertainment patio**

- Large dining table with seating for 12
- Closed wood burning fireplace

### **Kitchen**

- Large counter with 5 bar stools
- 5 plate gas hob
- 2 x eye level electric ovens - one is both a convection and a microwave oven
- Prep bowl
- Under counter wine fridges
- Single fridge
- Blenders
- Hot trays
- Smoothie makers
- Fully equipped – kettle, toaster, wok, coffee bodums etc.
- Tea / coffee station with additional undercounter fridge for milk etc

### **Separate scullery**

- Double door fridge/freezer
- 2 x dishwashers
- Airfryer
- Sandwich press
- Back door

### **Study Nook**

- Desk and chair

### **TV Room ( with sliding door )**

- TV
- Seating for 5-6
- Corner desk and chair

**Guest cloakroom**

- Basin and toilet

**Master Bedroom - views over the lagoon and ocean – opens to entertainment patio**

- 1 x King size bed
- 2 x pedestals with lamps
- Armchair
- En-suite and dressing room
  - Double basins
  - Free standing bath
  - Walk in shower
  - Separate toilet
  - Built in cupboards

**Entertainment Patio – views over Lagoon, ocean, mountains and Robberg Peninsula**

- Built in braai
- Prep bowl
- Two sun loungers
- Patio furniture set
- Bar height table with 5 stools
- Railing on patio is not child proof

**Garden Flatlet – separate entrance**

2 bedroomed self contained flatlet on lowest level with garden view

**Lounge/dining/kitchenette**

- TV with seating for 2-3
- Round dining table/games table with 4 chairs
- Double sink
- Under counter fridge
- Kettle
- Oven
- 2 Plate gas hob
- Microwave / convection oven

**Bedroom 1**

- Double bed
- Clothing rail

**Bedroom 2**

- 1 x King size bed
- 2 x pedestals and lamps
- Ceiling fan
- Built in cupboards
- Dressing table
- En-Suite bathroom
  - Double basins
  - Toilet
  - Walk in shower

### Equipped

- Inverter – Solar
- Wi-Fi
- Access to the lagoon is via a gate which is the same point at which boats may be launched onto the lagoon

### Parking

- Single garage
- Additional parking for 4 cars in driveway

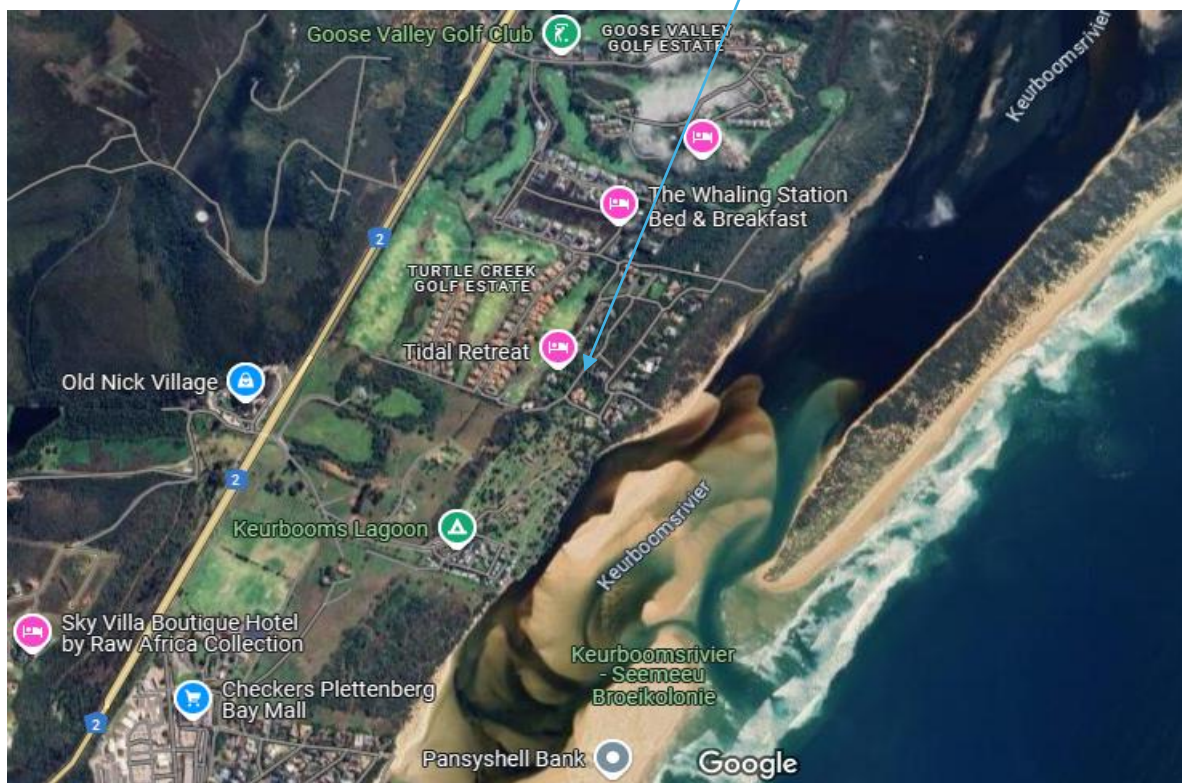
### House Rules

- No smoking
- No parties
- No pets

### Housekeeping Services

- Enquire with Reservations

*We trust you will enjoy this stunning property!  
Please see map below*



*Access to lagoon - less than 150m from the villa:*

