

The Meadows

Physical address: No 1, The Meadows, Plettenberg Bay

Location: Free Standing house in The Meadows Estate – walking distance to the lagoon

Sleeps: 16 max + sofa couch

Main House: 5 x bedrooms + Outside studio

Cottage: 2 x bedrooms and sleeper couch for two small children

Children Welcome

Main House

GROUND FLOOR

- Double Height Entrance Hall
- Guest Cloak Room
- Round table & 4 chairs
- Fireplace with 3 armchairs

Kitchen with Open Plan Dining Room

- Fully Equipped Kitchen with state of the art appliances
- Fridge – Freezer
- Electric Oven x 2 – Gas Hobs x 5
- Microwave
- Dining Table seating 12 people

TV Lounge / Music Room

- Flatscreen TV
- Seating for 7
- Coffee Table
- Opens up onto Patio
- Gas Fireplace

Bar Area

- Fully Equipped
- Mini Bar Fridge
- Ice Maker
- 5 Bar Stools
- Additional Flat Screen TV

Utility Room

- Washing Machine – Tumble Dryer
- Additional large Freezer

Conservatory

- Large Built In Jet Master Braai
- 12 Seater Table plus 2 benches

- Fans Overhead
- Opens onto garden & covered deck

Outside Area

- 12 Seater Wooden Table under Patio
- Pool - 15m x 5m, salt-chlorinated, heated with electric cover
- Sun Loungers x 4
- Easy Chairs x 2
- Bench
- Garden

Bedroom 1

- Double Size Bed
- En-Suite Bathroom with Bath, Shower, Toilet & Basin
- Back Facing
- Underfloor Heating
- Heated Towel Rail
- CCV Cameras

Guest Toilet

UPSTAIRS

- Accessed by an elegant circular staircase

Bedroom 2 - Master

- King Size Bed
- En-Suite Bathroom with Bath, Shower, Toilet & Basin
- Dressing Room
- Small Balcony with Sea & Lagoon Views
- Overhead Fans
- Heated Towel Rail

Bedroom 3

- Twin Beds
- En-Suite Bathroom with Bath, Toilet & Basin
- Sea & Lagoon Views
- Overhead Fan
- Heated Towel Rail

Deck – Outside

- Viewing Lounge
- Seating for 6 pax

Bedroom 4

- King Size Bed
- En-Suite Bathroom with Bath, Shower, Toilet & Basin
- Overhead Fans
- Underfloor Heating
- Heated Towel Rails
- 2 Easy Chairs
- Sea & Lagoon Views

Bedroom 5

- Twin Beds
- En-Suite Bathroom with Bath, Shower, Toilet & Basin
- Overhead Fans
- Underfloor Heating
- Heated Towel Rail
- Back Facing

Bedroom 6

- Separate Studio Apartment accessed via external staircase
- King Size Bed
- Arm chairs
- En-Suite Bathroom with Bath, Shower, Toilet & Basin
- Lounge Area with DSTV
- Well Equipped Open Plan Kitchenette with Breakfast Bar

Other

- Premium DSTV bouquet
- DVD players - central sound system
- Underfloor heating
- Heated towel rails
- Ceiling or freestanding fans in all bedrooms
- Fully equipped bar & braai area
- Free access to private tennis court, picnic area & pond
- ADSL: capped WIFI at 20 gigs, Additional gigs can be arranged if in advance at an additional cost

Maid Service

Enquire through reservations

Parking

- Double Garage + parking for further 5 vehicles

Security

- In addition to a manned security gate, walls and electrified fence, the property benefits from two intercom systems: from the main gate to the house and from the gate barrier to the house and cottage. There is a comprehensive house alarm system linked to a local security company, plus additional internal security in both the main house & cottage

Specific House Rules

- No Smoking in the House
- No Pets
- Not Wheelchair friendly

The Cottage – Optional at an additional cost

GROUND FLOOR

Lounge & Dining Area

- Flatscreen TV
- DSTV
- Dining Area seating 6
- Coffee Table

Kitchen

- Fully Equipped Kitchen
- Oven – Stove – Hob
- Microwave
- Fridge – Freezer

Bedroom 1 - Master

- Queen Size Bed
- 2 Bed Side Tables with Reading Lamps
- Dressing Room
- En-Suite Bathroom with Bath, Shower, Toilet & Basin
- Balcony with sea views

Bedroom 2

- 2 Single Beds / Queen Size Bed

Bedroom 3

- Sofa Bed
- Suitable for 2 Children
- Cloak Room

Bathroom

- With Luxury Shower, Toilet & Basin

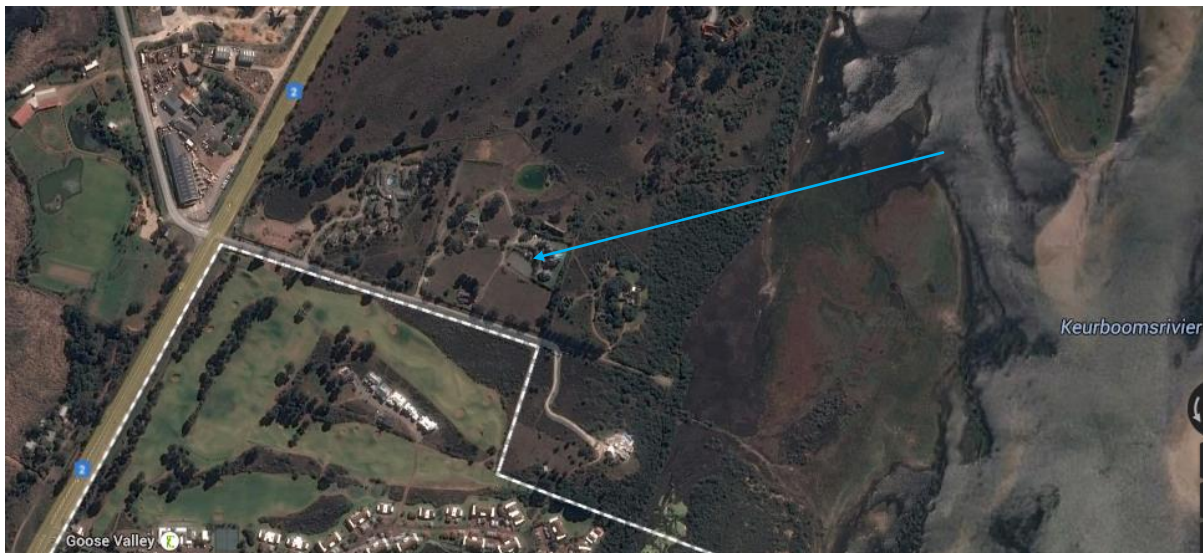
Other

- Corridor houses the Washing Machine
- Storage Area

Outside

- Outside Dining Table (seating 6)
- Entertainment Deck on 2 sides of the building with tiled alcove
- Sun Loungers
- External access to the built-in fireplace / braai
- Parking

See map below



We trust that you will enjoy this lovely property!