

Skerryvore 28

Physical address: 28 Skerryvore Avenue, Plettenberg Bay
GPS Co-ordinates: 34 05 03 56 S / 23 21 58 17 E

Location: Alongside Robberg Vlei and within a five minute walk of Sanctuary Beach or Solar Beach

Sleeps 8
Children welcome

From the street this house presents a double wooden front door and two garages plus brick paved parking for two more cars. Go beyond and a magical country-style home emerges, designed to fit into the sloping contours of the property. The house is built around a garden courtyard with further courtyards that give every bedroom its own special space. It features Oregon and yellowwood – ten sets of French doors and 15 sash windows, with Oregon floors throughout the living area.

BEDROOMS

Bedroom 1 (Main Bedroom)

- King size extra length bed
- En-suite bathroom with bath and twin basins, separate shower/WC/basin and dressing room
- View into courtyard garden on one side, and out over the green belt overlooked by the cliffs of the Whale Rock reserve.
- Private balcony on one side/ en suite bathroom has French doors into a courtyard garden on the other side

Bedroom 2

- Double bed – wrought iron brass bed
- Bathroom with shower/bath/toilet alongside but not strictly en suite as it acts as guest cloaks for the house
- View of courtyard garden

Bedroom 3

- Queen size bed
- En-suite bathroom (shower/bath/toilet)
- Dressing area separate from bedroom and bathroom
- View of pool courtyard as well as garden courtyard
- Access from garden courtyard only
- Separate access and alarm system from main house

Bedroom 4

- A separate flat let off staircase between garages and main house with two extra length $\frac{3}{4}$ beds which can be made up as a mega double
- En-suite bathroom (double shower/toilet) and walk-in dressing room/cupboard
- View of garden and courtyards
- Private patio with outside table
- TV, own kitchenette
- Separate access and alarm system from main house

Loft

- Day bed
- Upstairs but not private from the house's living area. Used for sewing, clothes horse, ironing etc.

LIVING AREAS

The living room and dining room are contiguous and open plan to the kitchen

Living Room

- Two couches, two wing backs and an occasional chair
- Seats 8
- Jet master fireplace
- Courtyard on one side, green belt on the other
- Leads onto a white wooden balcony that runs the length of the living area and faces into the green belt

Dining Room

- Table seats 8 comfortably.
- Jet master fireplace
- Same white balcony as the living area on one side and the kitchen on the other side

Library

- Reading and watching TV
- Folding glass doors that open out completely onto white wooden balcony that runs past living room.
- Two comfortable chairs and two poofs
- TV, DSTV and DVD machine

Kitchen

- Equipped with fridge/freezer, beverage fridge, gas hob, electric oven with warmer drawer, prep bowl
- Hob set in island with three bar stools
- Open plan to living/dining area

Scullery / Laundry

- Separate from kitchen, opening into a drying courtyard with outside sink and tiled counter
- Washing machine, tumble dryer, dishwasher, pantry shelves
- Washing line in drying courtyard

Braai Patio

- Barbeque
- Dining table which can seat eight

Wine Cellar

Downstairs but un-stocked at present. Tasting table and two stools.

Swimming Pool

- Outer edge of lawned courtyard (pool approx 2m x 4 m)
- Loungers
- Protective net

OUTDOOR

Garden areas consist of various courtyards that are all fenced/gated. Rose garden that has strawberries in summer, indigenous garden.

Parking

Double garage with remote controls; further open parking for two vehicles

Other

Internet facilities : None – please bring your own dongle

Existing landline

Security Company, alarm, burglar bars, garden sensors

Under floor heating – library

Air-con in bed 1 and ceiling fans in living area

Gardener's WC

Pet friendly

Equipment

TV – DSTV –DVD Player – mini CD Player

Washing machine – tumble dryer – clothes horse/line

Dishwasher – coffee plungers - microwave – blender – hand beater – oven – warming drawer – hob

Two sets of linen including bath and beach towels for each bedroom

2 Pool loungers + umbrella

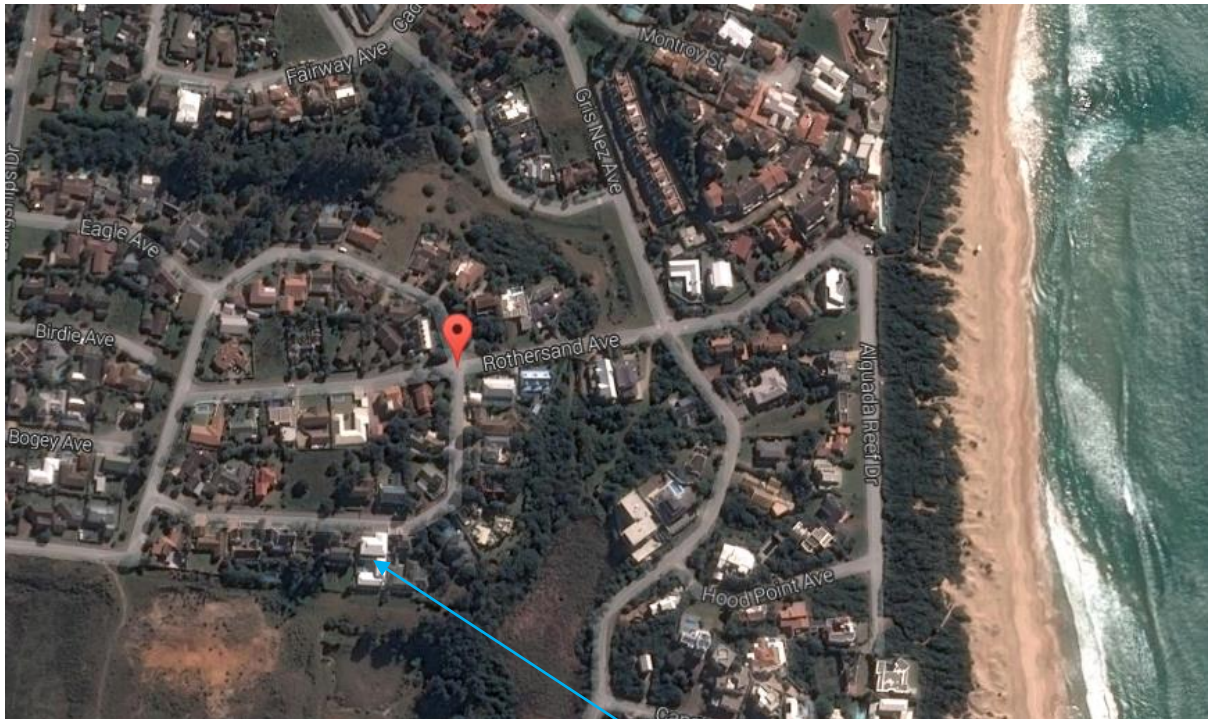
Maid Service

Enquire through Reservations

Specific House Rules

No smoking in any rooms in the house / smoking outside is permissible

Respect for owner's books – welcome to read, but not for removing



We trust you will enjoy this lovely property!