

# Bowtie 9

Physical address: 9 Bowtie Drive, Plettenberg Bay  
GPS Co-ordinates: 34°02'54.83"S / 23°22'07.10" E

Location: Central Plettenberg Bay

Sleeps 8

Children of all ages welcome

---

## Located

- The house is situated at the end of a quiet pan-handle which ensures privacy and complete comfort.
- Spectacular panoramic views over the lagoon, the Indian Ocean and the Tsitsikamma Mountain range.
- Less than a 5 minute drive to Lookout.
- Walking to Lookout is possible but not recommended as the road back is quite steep!
- Other beaches, (Central, Robberg, Solar and Keurbooms) are also just a short drive away.
- Halfway between the Market Square shopping complex on Beacon Way and Main Street in Plettenberg Bay town centre. Both are also only a 5 minute drive away (under a kilometer).

Bowtie House can accommodate 8 people in four luxurious en-suite bedrooms (2 king beds, 1 queen and 1 double).

There is a 24 hour monitored alarm system, external beams surrounding the house, and trellidoors on all the doors and windows downstairs

Bowtie House is on two levels connected by an internal staircase.

Both levels have extensive outside entertainment areas and breathtaking views.

Beach Umbrella and Beach Equipment Available

Single Carport and parking available for other vehicle on the driveway and at the side of the house.

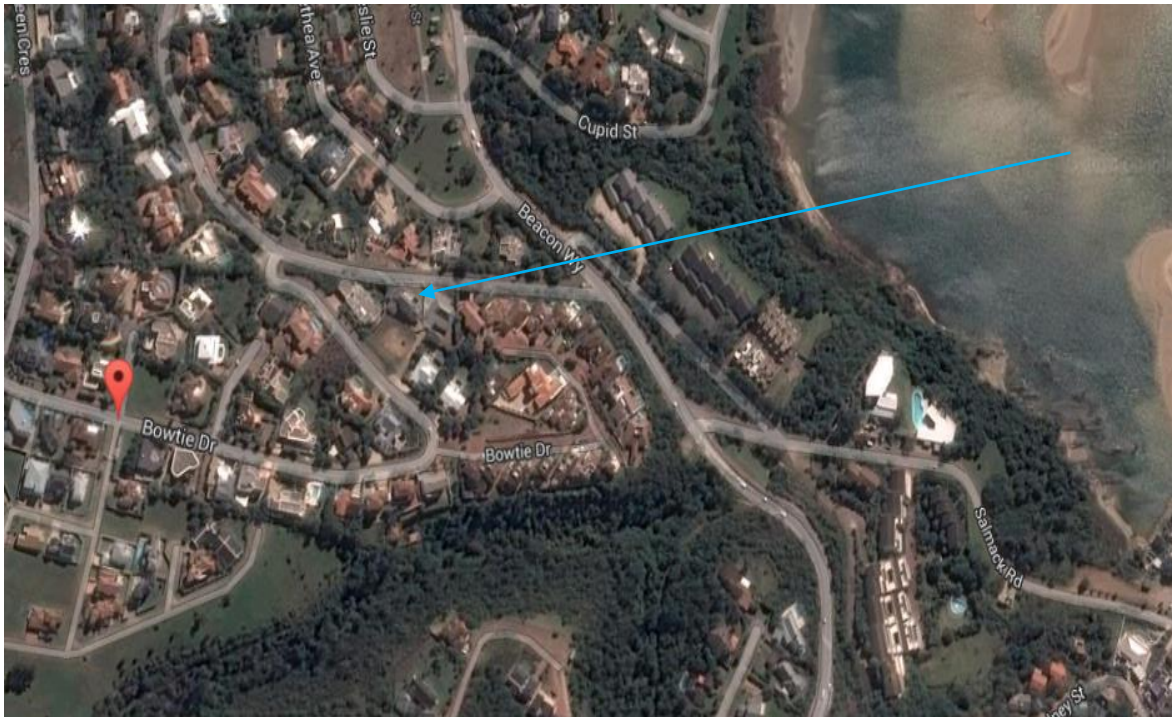
## Upstairs

- The upper level consists of the entrance hall with guest toilet, open-plan living area, main bedroom with en-suite bathroom, kitchen and study.
- 80m<sup>2</sup> lounge and dining area
- LG 55" Smart TV, DSTV Explora decoder and DVD/CD player in the lounge
- A BOSE surround sound system feeds sound to ceiling mounted speakers in the kitchen and both areas of the upstairs deck.
- Twelve-seater dining table
- Sliding doors open from the lounge and dining room onto a 90m<sup>2</sup> tiled deck
- At one end of the deck there is a covered area with a 12-seater wooden patio table ideal for al fresco eating and at the other end are two 6-seater table and chairs..
- A Weber Braai with rotisserie and a Cadac skottle Braai with gas bottles are provided.
- Main kitchen: Bosch electric oven and 4 plate ceramic hobs, Panasonic microwave convection oven, Kenwood Major, Breville grill, cappuccino/espresso machine, deep-fat fryer and electric wok. Dishwasher. There are also slow cookers, electric frying pans and two 40 litre chafing dishes. The double door fridge freezer has ice and water dispensers
- A washing machine, tumble dryer and additional fridge and freezers are in the separate scullery room behind the kitchen.
- Study: wireless broadband, TV and printer.
- Master suite consists of a large bedroom with a king size bed, en-suite bathroom with shower, bath and double sink. TV with separate Xtraview decoder and DVD / CD player.
- The lower level is accessed by a staircase in the centre of the lounge.

## Downstairs

- The lower level consists of 3 exquisitely furnished en-suite bedrooms, and a kitchen/dining area.
- Kitchen: It has a large double-door fridge/freezer, dishwasher, microwave and 2 plate portable electric hobs. There is enough crockery, cutlery and cooking utensils for 8 people.
- Breakfast bar with seats and six seater table.
- A wall-mounted Sony LCD TV and a mini hi-fi system complete the downstairs dining area.
- Two of the downstairs bedrooms have televisions and DVD / CD players. All of the televisions in the house are linked to the PVR dual view decoder in the upstairs lounge.

- Bathrobes and hairdryers are provided in all 4 bedrooms.
- French doors in two of the bedrooms and the dining room open onto a huge 200m<sup>2</sup> wooden deck with a sparkling swimming pool.
- Pool loungers and a 10-seater patio suite.



***We trust you will enjoy this Lovely Property!***