

Forest Hall Estate

Location: The Craggs

Sleeps:

- Manor House: 5 rooms – sleeps 10 + 3 beds for children
- Cottages: 4 cottages - sleep 2 in each therefore 8 + 2 daybeds suitable for younger children
- Maximum 22 Pax including children and babies

Children welcome – *please note that there is no pool safety net

Manor House

Covered foyer at entrance, with entrance hall leading to;

Reading Room -Patio doors open to east verandah

- Fireplace
- Seating for 4 – 6
- Library

Front Lounge - Patio doors open to front verandah

- Seating for 4-6
- Screen with projector (to be replaced with Smart TV)
- Can view Netflix, Dstv

Dining Room - Patio doors open to front and west verandahs

- Fireplace
- Large dining table – can seat up to 18/20

Cloakroom off passage

Kitchen – at the end of the passage or access via sunroom

- Fireplace
- Two large gas hobs
- Electric ovens
- 2 fridge/freezers
- 2 cold rooms
- Nespresso coffee machine

Sunroom – at the centre of the manor

- Fireplace
- Casual seating 4-6

Large covered Patio – sliding windows and doors open up to outdoor decks

- Dining table seats up to 20
- Casual bench seating for 18-20 at east and west ends
- 2 fireplaces
- Casual lounging seats 8-10

Bedroom 1 – Exterior door leading to east verandah

- King/twin bed
- Fireplace
- 2 armchairs
- En-suite bathroom;
 - Bath with hand shower
 - Toilet
 - Basin
 - Heated towel rail

UPSTAIRS

(Via staircase with a safety trellidoor at the bottom)

Ocean Room – views over garden and towards ocean (partial view)

- King/twin bed4
- Small enclosed fireplace
- 2 armchairs
- Separate en-suite;
 - Free-standing bath
 - Shower
 - Toilet
 - Bidet
 - Twin basins

Eagle Room – loft bedroom – skylights

- Double bed
- 2 armchairs
- Separate en-suite;
 - Lovely free-standing bath
 - Large open shower
 - 2 single basins
 - Toilet & bidet

Queen Room - view overlooking front gardens

- King/twin bed
- 2 armchairs
- Fireplace
- Open bathroom – free-standing bath, 2 basins
- Separate shower
- Separate toilet & bidet

King Room – view overlooking front gardens

- King/twin bed
- Single daybed/easy chair
- Fireplace
- Separate dressing room
- Separate toilet & bidet
- Open bathing area – free-standing bath, twin basins and glassed shower
- LOFT AREA – 3 SINGLE BEDS, 2 easy chairs - has its own separate toilet & bidet, handbasin

Cottages (east side of Manor House)

Four cottages in a row each with separate entrance under covered verandah

Cottage 1

- Small lounge with fireplace
- 2 chairs, daybed (suitable for a child)
- Open kitchenette equipped with bar fridge, sink, stove, kettle
- Small dining table with 2 chairs
- Separate bedroom – king/twin bed, single armchair & French doors to small patio
- Separate bathroom – shower, basin, toilet & bidet

Cottage 2

- Separate bedroom – King/twin bed with door to patio
- Shower, toilet, basin
- Separate dressing room

Cottage 3

- King/twin bed
- Easy chair
- Bathroom with hand shower over bath, basin, toilet

Cottage 4

- King/twin bed
- Daybed (suitable for child)
- bathroom – bath with hand shower, basin, toilet

GYM – West side of Manor House

- separate gym room with spinning bikes, weights and separate bathroom facility

POOL HOUSE – in the gardens in front of Manor House

- Braai / barbeque facilities – gas
- Wood burning pizza oven
- Dining and lounging for approx. 10-20
- Large swimming pool – heated - NO POOLNET.
- Outdoor shower and toilet

Gardens & Forest

- Various decks and hiking paths all available for guest use
- Estate manager available to transport down to beach in need
- There are livestock (cows) on the estate & managers dogs

Equipped

- Generator
- Wi-Fi
- DSTV

Parking

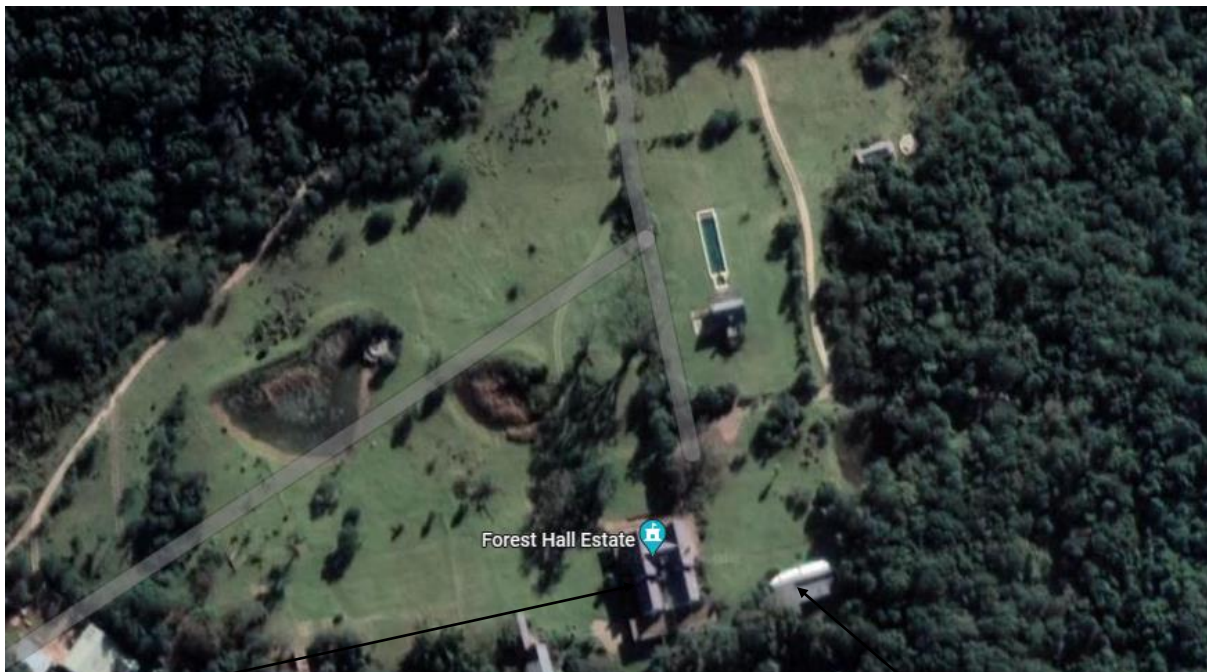
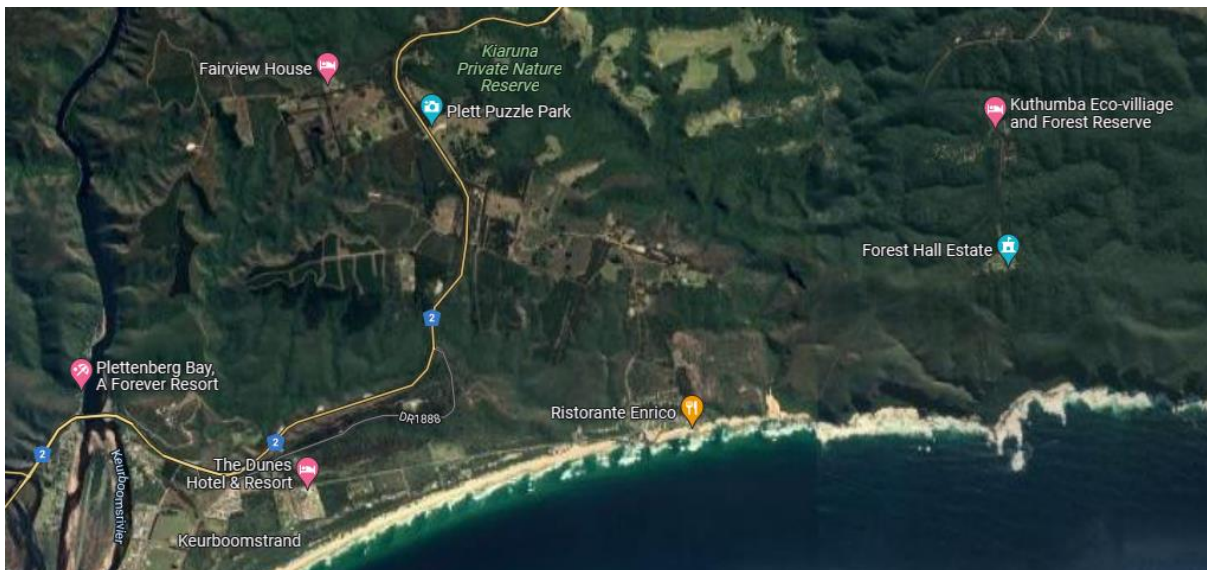
- Open parking

House Rules

- No smoking
- No pets

Housekeeping

- Serviced daily
- Estate manager on duty



Manor House

Cottages

We trust you will enjoy this stunning property!